

Dall'idea al successo • From idea to success

# Box 1

prima piega-incollatrice manuale al mondo  
*first manual fedded folder-gluer world-wide*



## MACCHINA PIEGA-INCOLLATRICE BOX 1

Box 1 è una macchina piega-incollatrice disegnata per la realizzazione degli astucci lineari, con alimentazione manuale.

Macchina predisposta per l'aggiunta di un applicatore di nastro bi-adesivo.



## BOX 1 FOLDING AND GLUING MACHINE

BOX-1 is a semi-automatic machine designed to fold and glue straight-line boxes in automatic way, with manual feeding.

The machine has been designed to accomodate an double-sided tape applicator (optional on request)

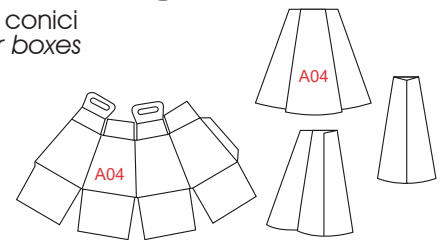
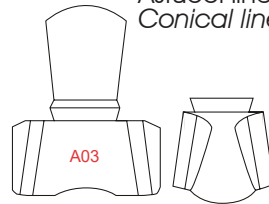
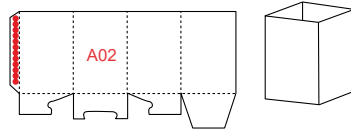
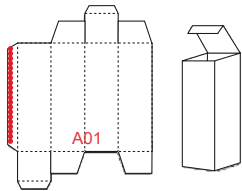
**Prodotti realizzabili con la macchina Box 1**  
**Products achievable with the Box 1 machine**



Astucci Lineari  
Linear boxes

Astucci autoformanti  
Snap lock bottom boxes

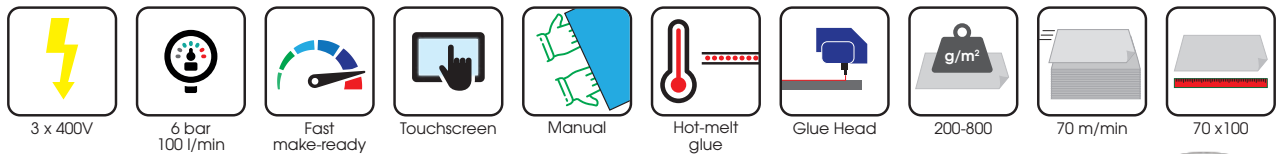
Astucci lineari conici  
Conical linear boxes



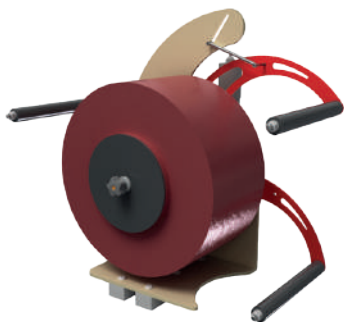
Caratteristiche tecniche	
Formato di introduzione	Max 720 x 1020 mm Min 120 x 120 mm
Grammatura carta	Min 200 g/m <sup>2</sup> Max 600 g/m <sup>2</sup>

Technical Characteristics	
Introduction format	Max 720 x 1020 mm Min 120 x 120 mm
Paper weight	Min 200 g/m <sup>2</sup> Max 600 g/m <sup>2</sup>

\* i dati tecnici possono variare a seconda del materiale, dimensioni e impostazioni utilizzate  
 technical data are subject to change depending in material, dimensions and set-ups used



**Opzionali su richiesta**  
**Optional on request**



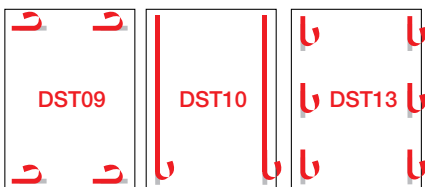
Applicatore nastro a strappo "RAP STRIP"  
 Tear-tape applicator "RAP STRIP"

Applicatore nastro biadesivo "RAP"  
 Double-sided tape applicator "RAP"

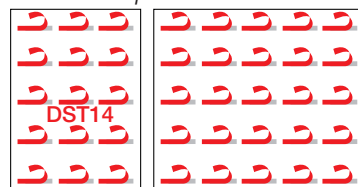


**Prodotti realizzabili con gli opzionali su richiesta**  
**Products achievable with the optional equipment**

Poster  
Poster



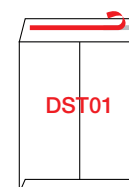
Campionari tessuti  
Tissue samples



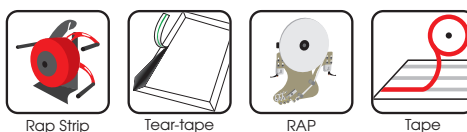
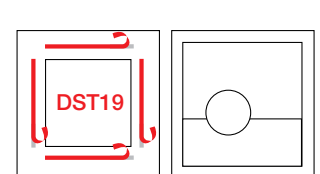
Buste  
Envelopes



Sacchetti  
Bags



Portaritratti per foto  
Picture frames



MULTI IMPORT Srl - Via Varalli, 1 - 20089 ROZZANO MI - Tel. 02 824 03 55  
 www.multi-import.it - info@multi-import.it